



FERREIRA DE SÁ

LUXURY RUGS SINCE 1946

IN|OUTDOOR
COLLECTION

made by
HAND

WWW.FERREIRADESA.PT

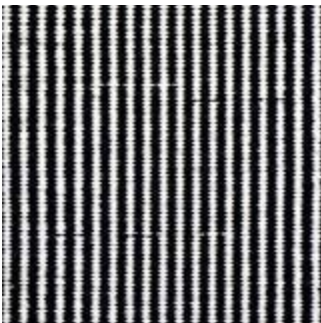
TECHNICAL PATTERNS

The hand-weaving techniques allow clients the possibility of creating a bespoke rug. As shown in this chapter, it is possible to play with different patterns and use more than one in the same rug.

Each Set of Designs includes a group of patterns which can be woven into the same rug, according to the client`s individual taste.

Choose the combination you prefer and turn it into your own exclusive Ferreira de Sá masterpiece.

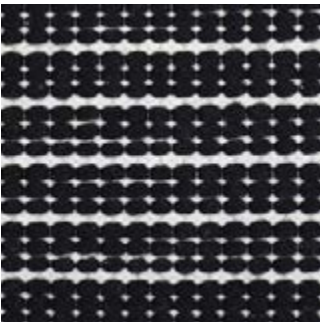
ON SINGLE LOOMS



STRIPES ●

ON COMBI LOOMS

SET 01



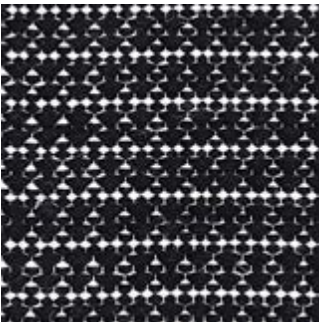
CABANAS ●



CULATRA ●



ANGRA ●



RENDA ●



RAZZ ●



SLOPE ●

● ADEQUATE FOR OUTDOOR

ON
COMBI
LOOMS
SET 02



FISHBONE ●



AUGÉ ●



NASUS ●



MARTA ●

ON
COMBI
LOOMS
SET 04



SPINHA ●



OLHO ●



ALMALAGUÊS ●

● ADEQUATE FOR OUTDOOR

ON
COMBI
LOOMS
SET 05

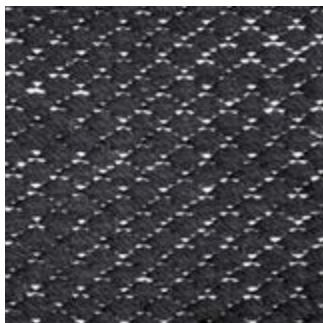


AIKA ●



ADEL ●

ON
COMBI
LOOMS
SET 07



PICO ●



FAIAL ●



LANZAROTE ●

● ADEQUATE FOR OUTDOOR

HAND-WOVEN OUTDOOR

Whether it is a yacht project or a vacation house on the beachside, Ferreira de Sá has been filling both interior and exterior environments with design and style. The outdoor rugs can do for exterior spaces what they've been doing for indoor spaces for years: define an area by adding color, style and texture.

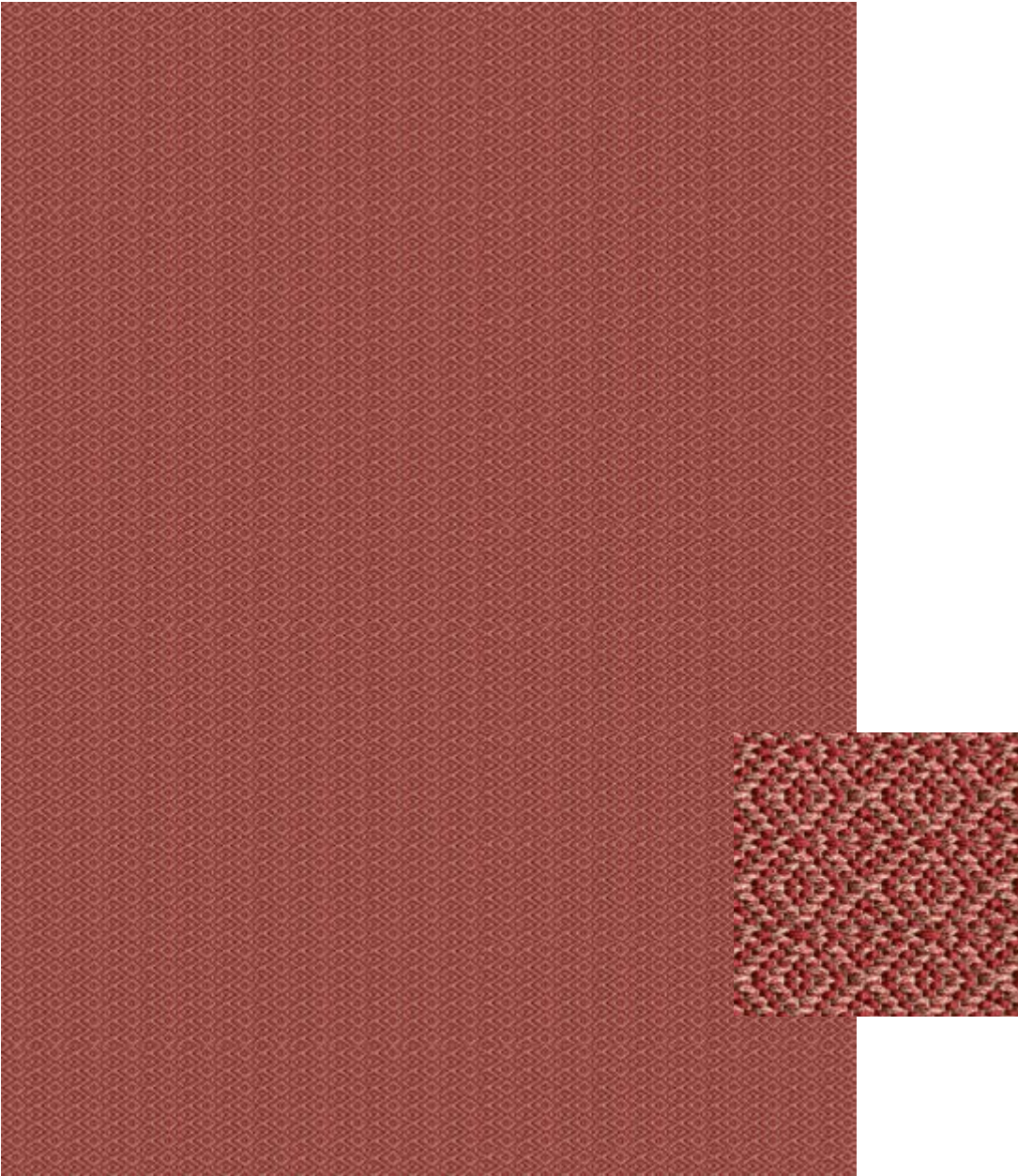
Inspired by the freshness of the ocean and the local fishing tradition, these rugs are produced with the most durable polypropylene ropes. They combine an incredibly high resistance to sunlight and wear, with beauty, design and elegance.

MARTA



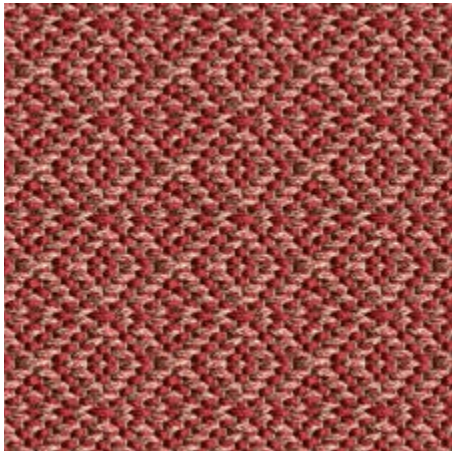
MART A

COMBI LOOMS - SET 02



Colour Reference
Dahlia
Composition
Polypropylene
Size
170x240cm

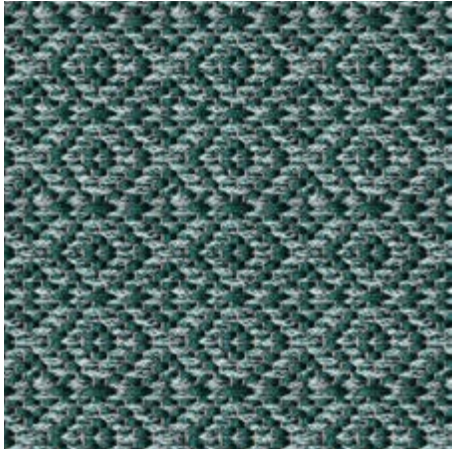
COLOUR COMBINATION



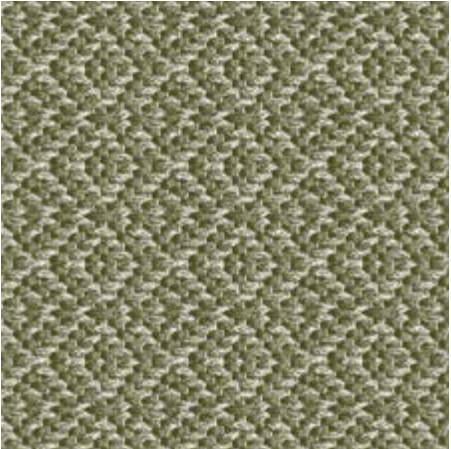
MART A | OL64 - OM19



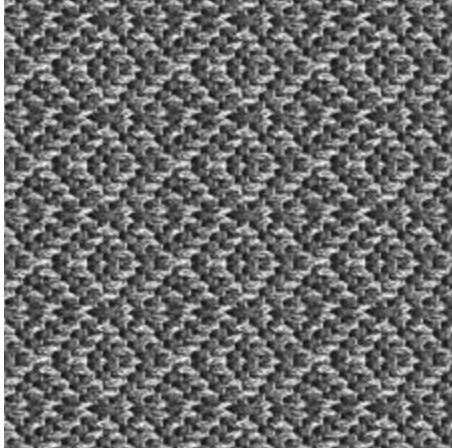
MART A | OL63 - OM18



MART A | OL24 - OM12



MART A | OL43 - OM23



MART A | OL57 - OM28

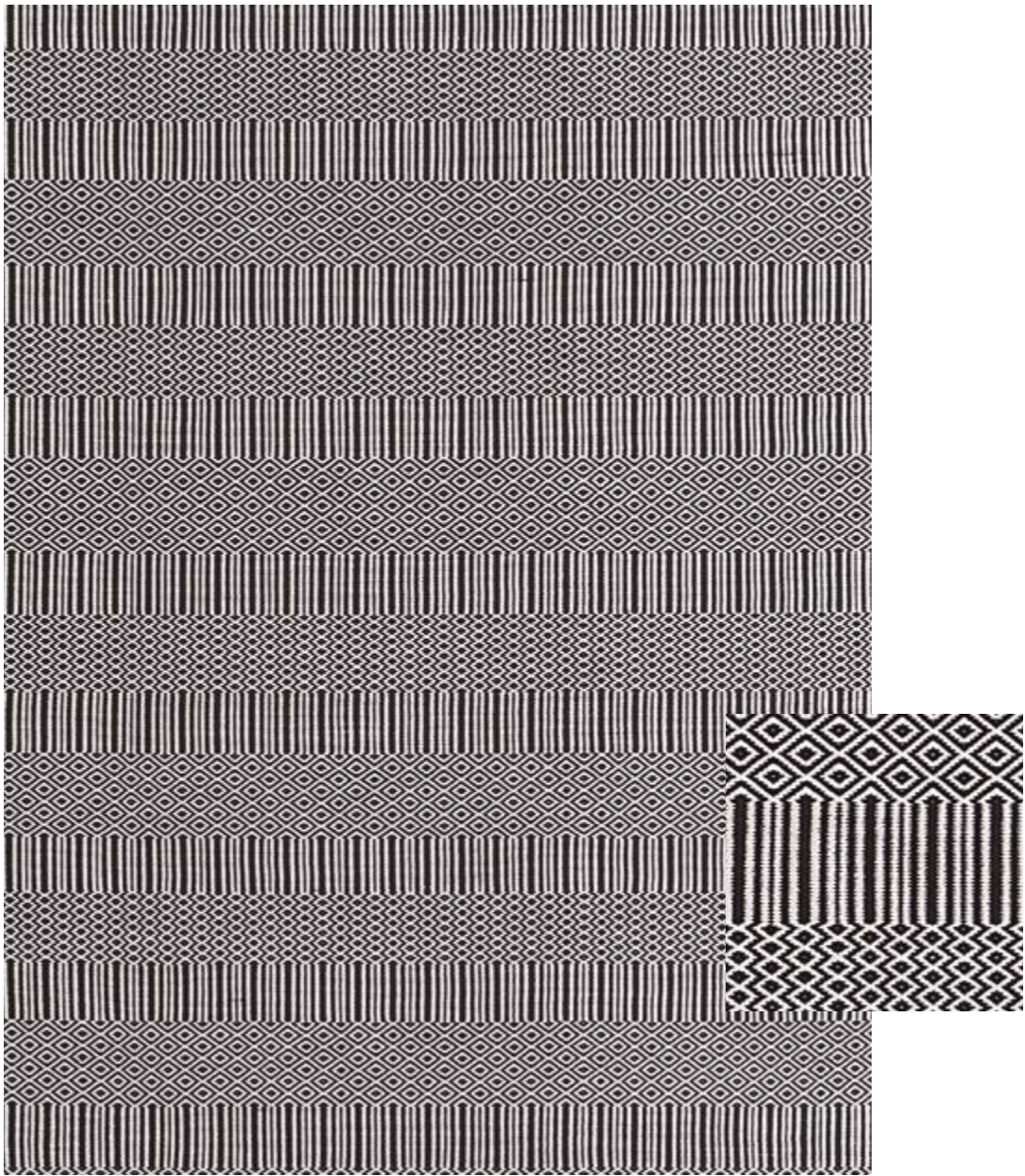


MART A | OL2 -OM25

For a true color match and guidance,
please contact the commercial department.

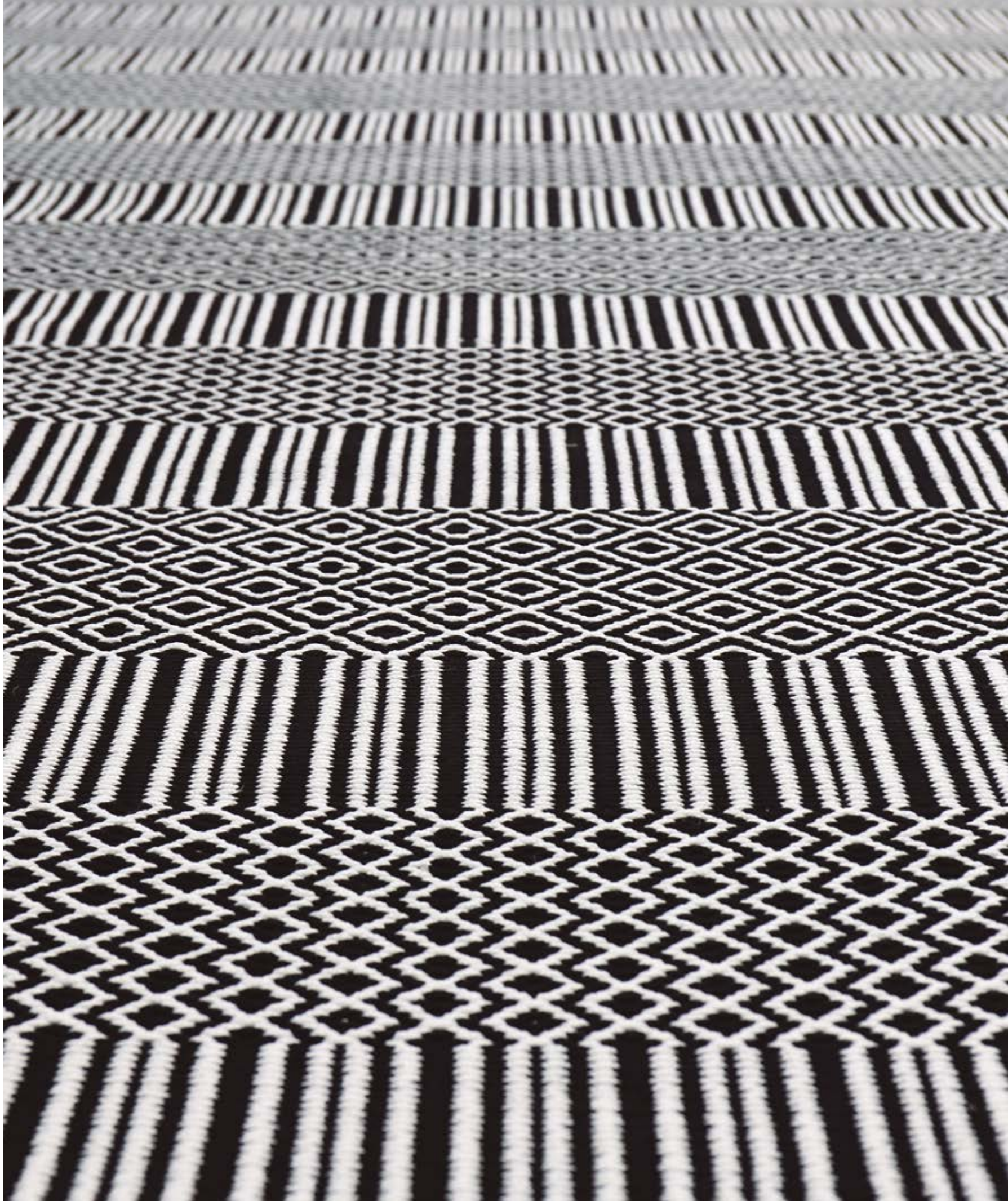
NORMA

COMBI LOOMS - SET 02
PATTERNS: NERVE, AUGÉ AND NASUS



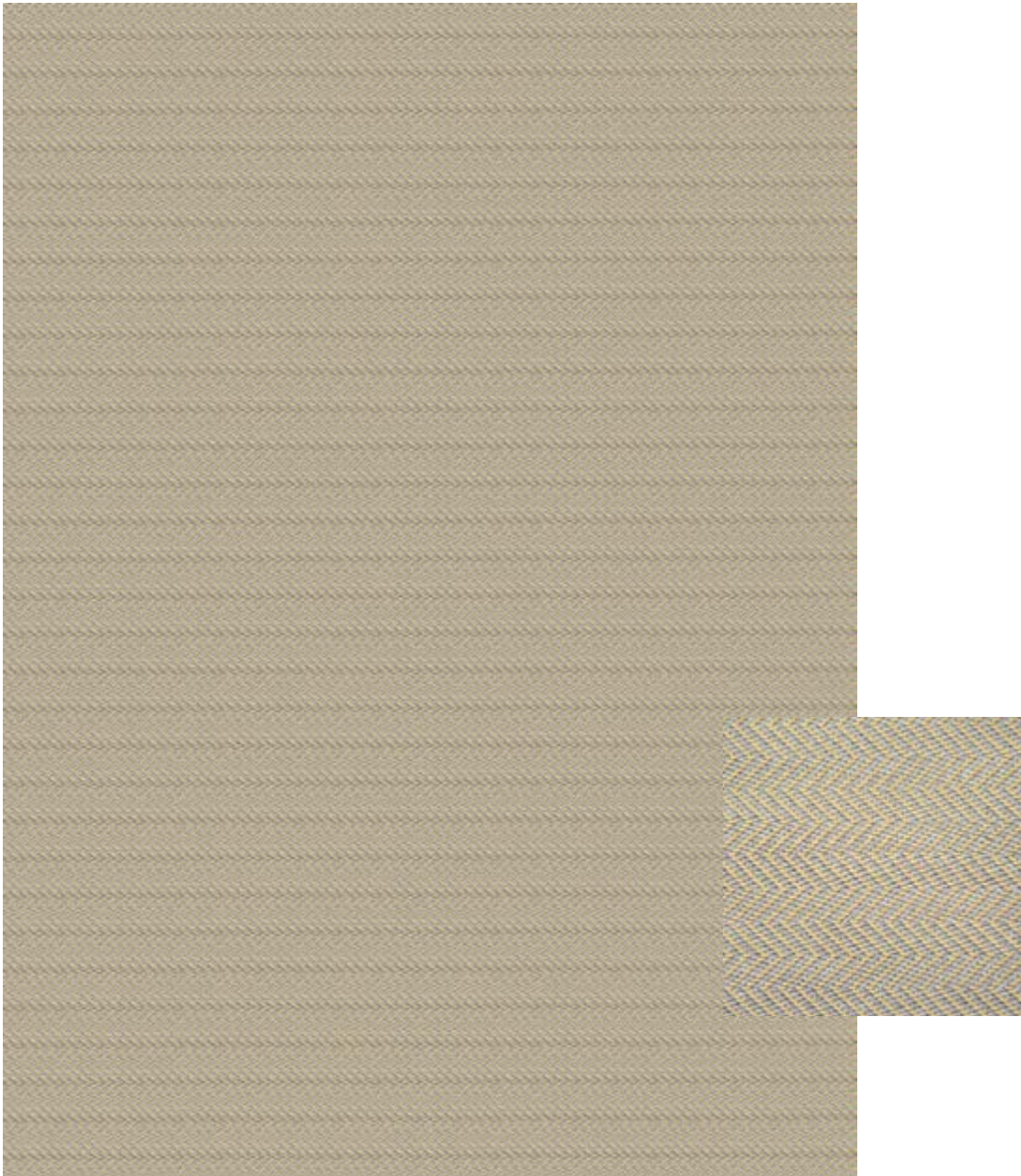
Colour Reference
Java
Composition
Polypropylene
Size
170x240cm

For a true color match and guidance,
please contact the commercial department.



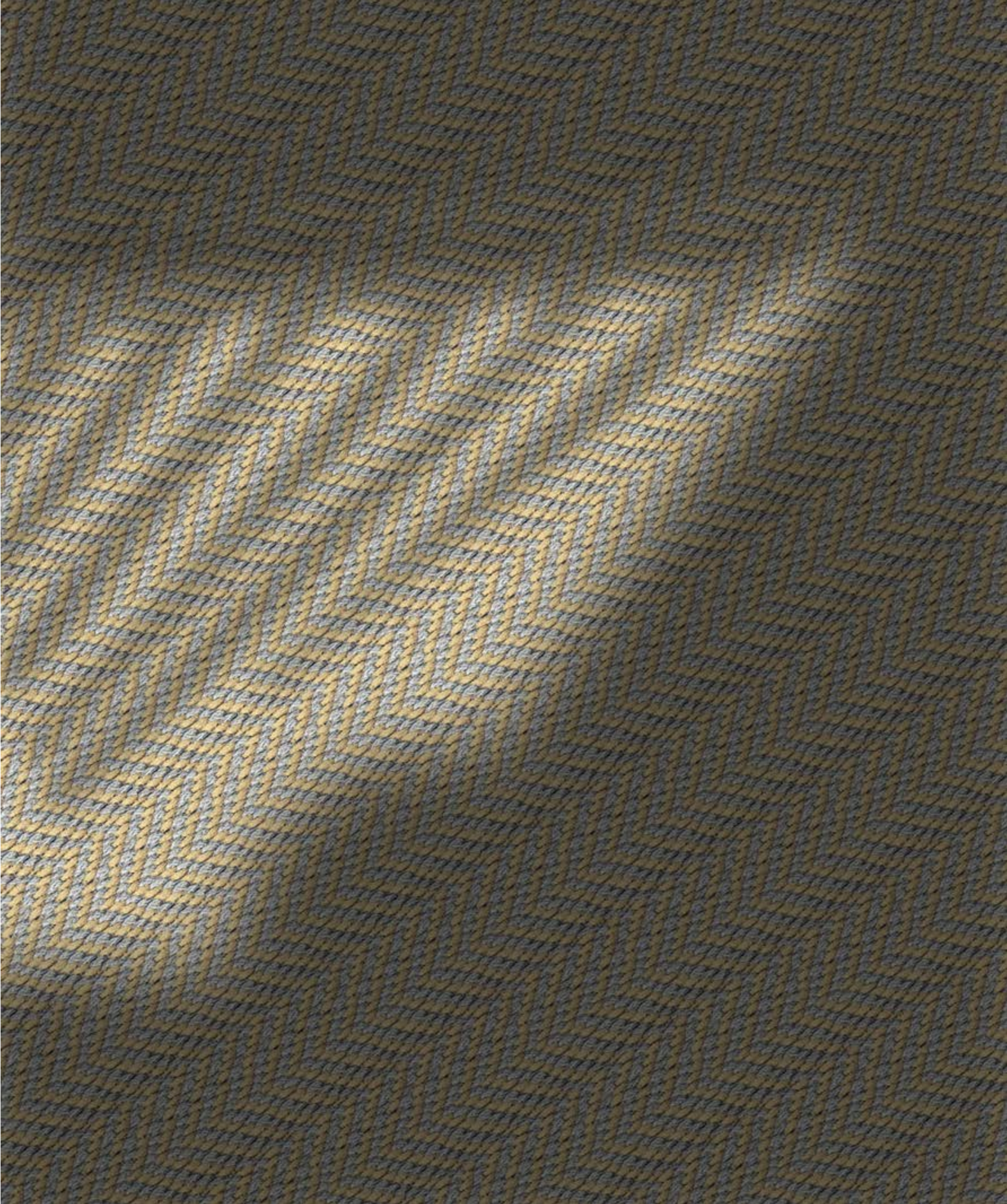
R A Z Z

COMBI LOOMS - SET 01



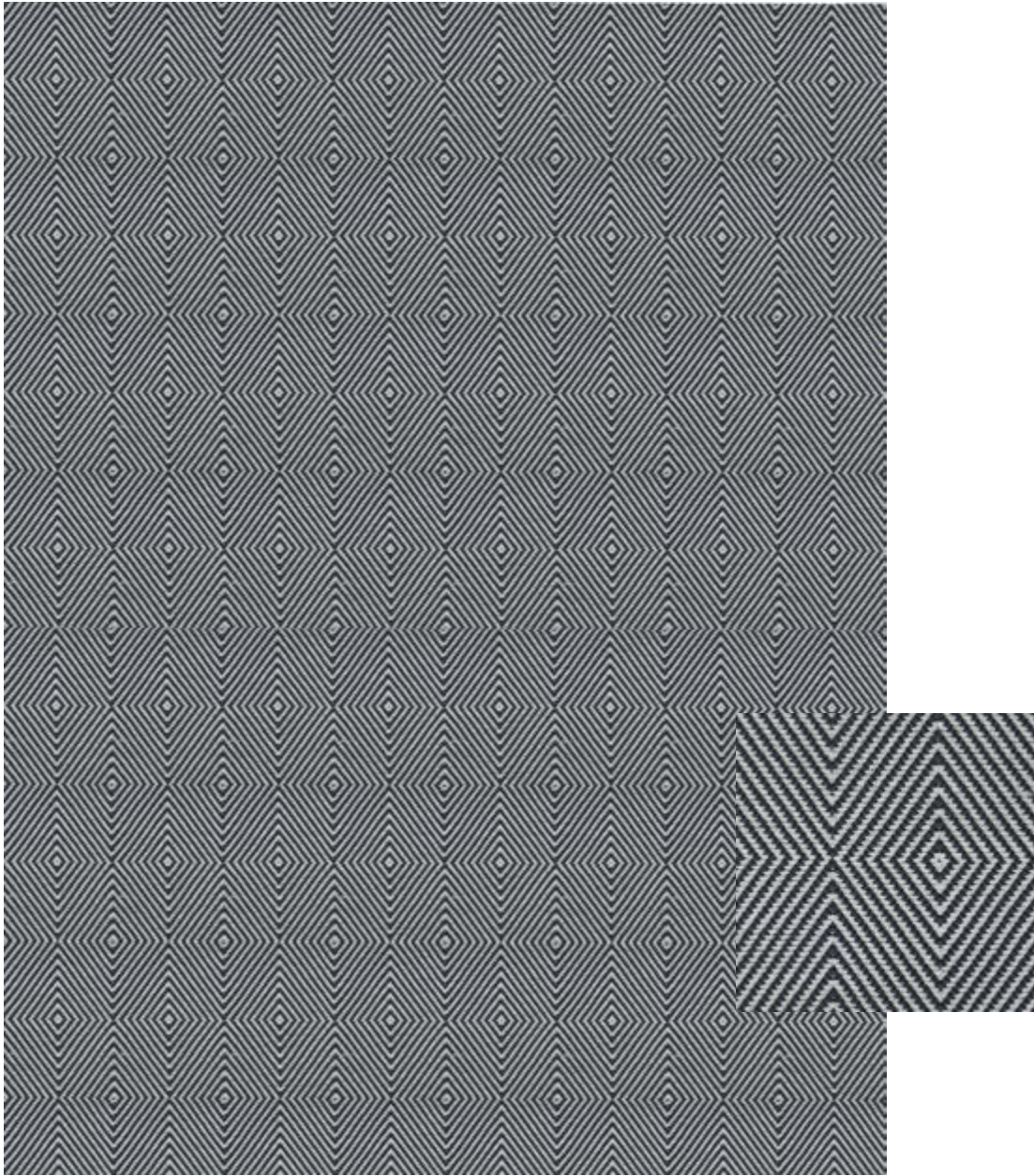
Colour Reference
Marzipan
Composition
Polypropylene
Size
170x240cm

For a true color match and guidance,
please contact the commercial department.



OLHO

COMBI LOOMS - SET 04

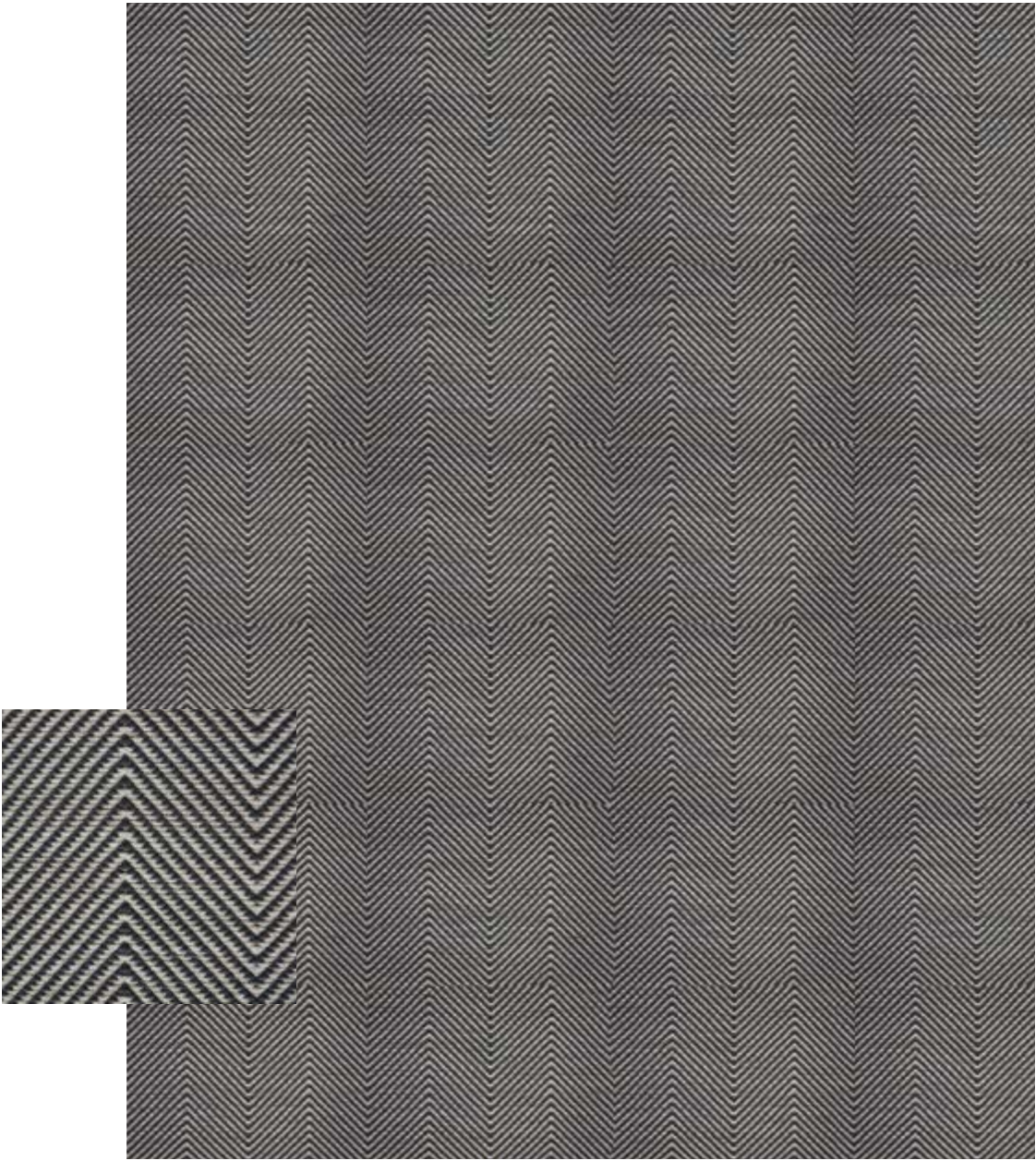


Colour Reference
Magnet
Composition
Polypropylene
Size
170x240cm

For a true color match and guidance,
please contact the commercial department.

SPINHA

COMBI LOOMS - SET 04



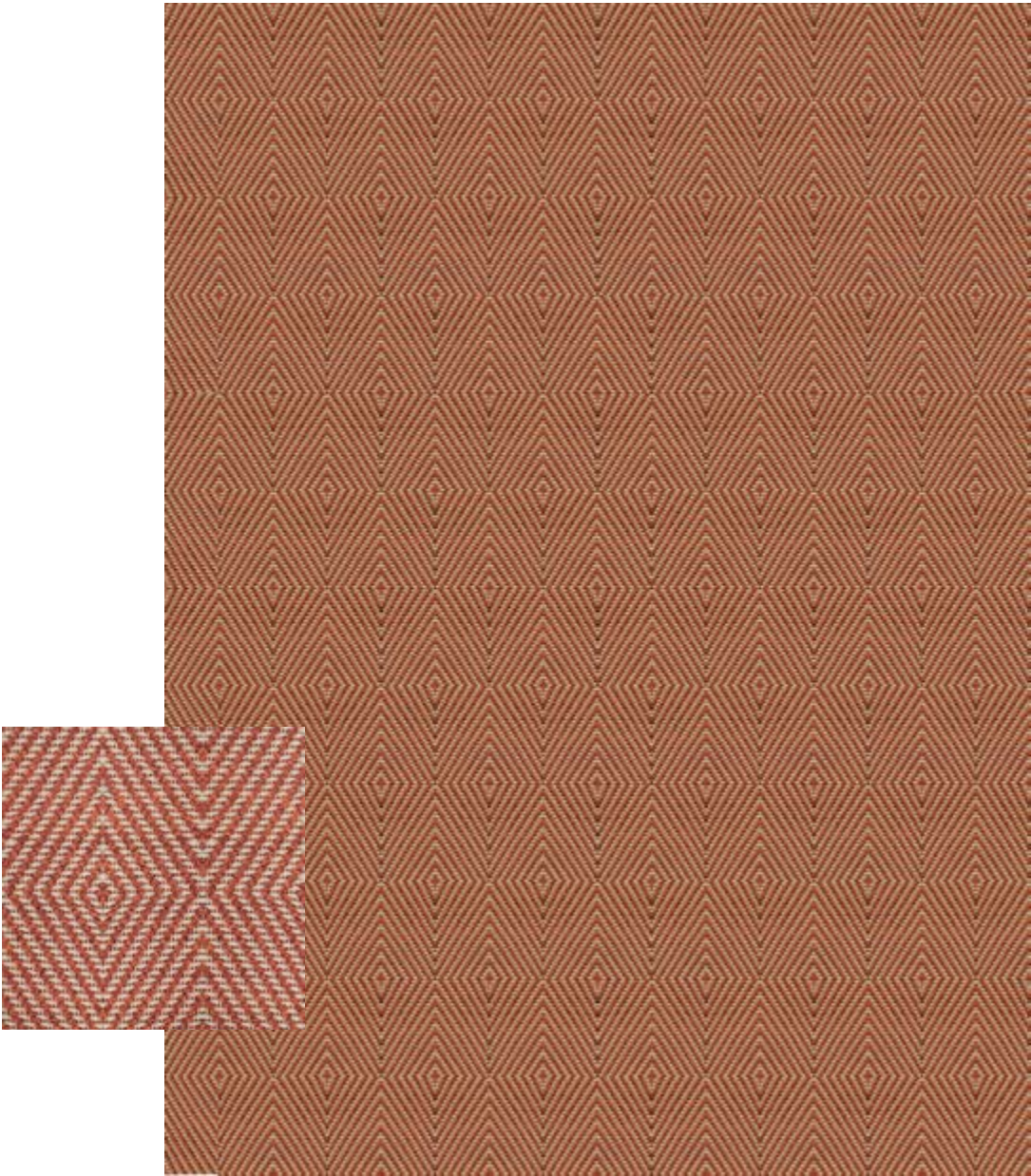
Colour Reference
Ganache
Composition
Polypropylene
Size
160x220cm

For a true color match and guidance,
please contact the commercial department.



ALMALAGUÊS

COMBI LOOMS - SET 04

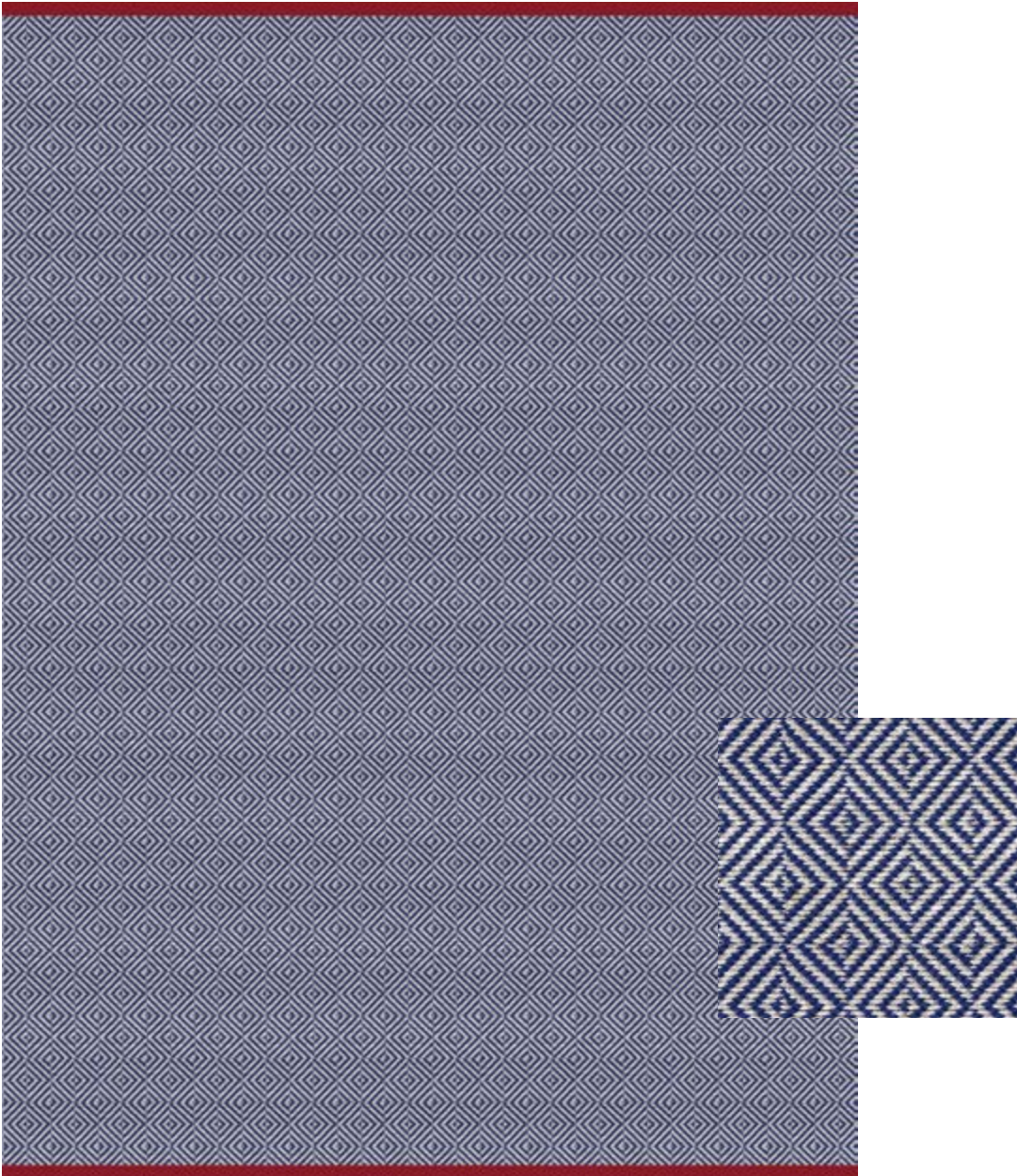


Colour Reference
Popsicle
Composition
Polypropylene
Size
170x240cm

For a true color match and guidance,
please contact the commercial department.

ADEL

COMBI LOOMS - SET 05



Colour Reference
Clematis
Composition
Polypropylene
Size
170x240cm

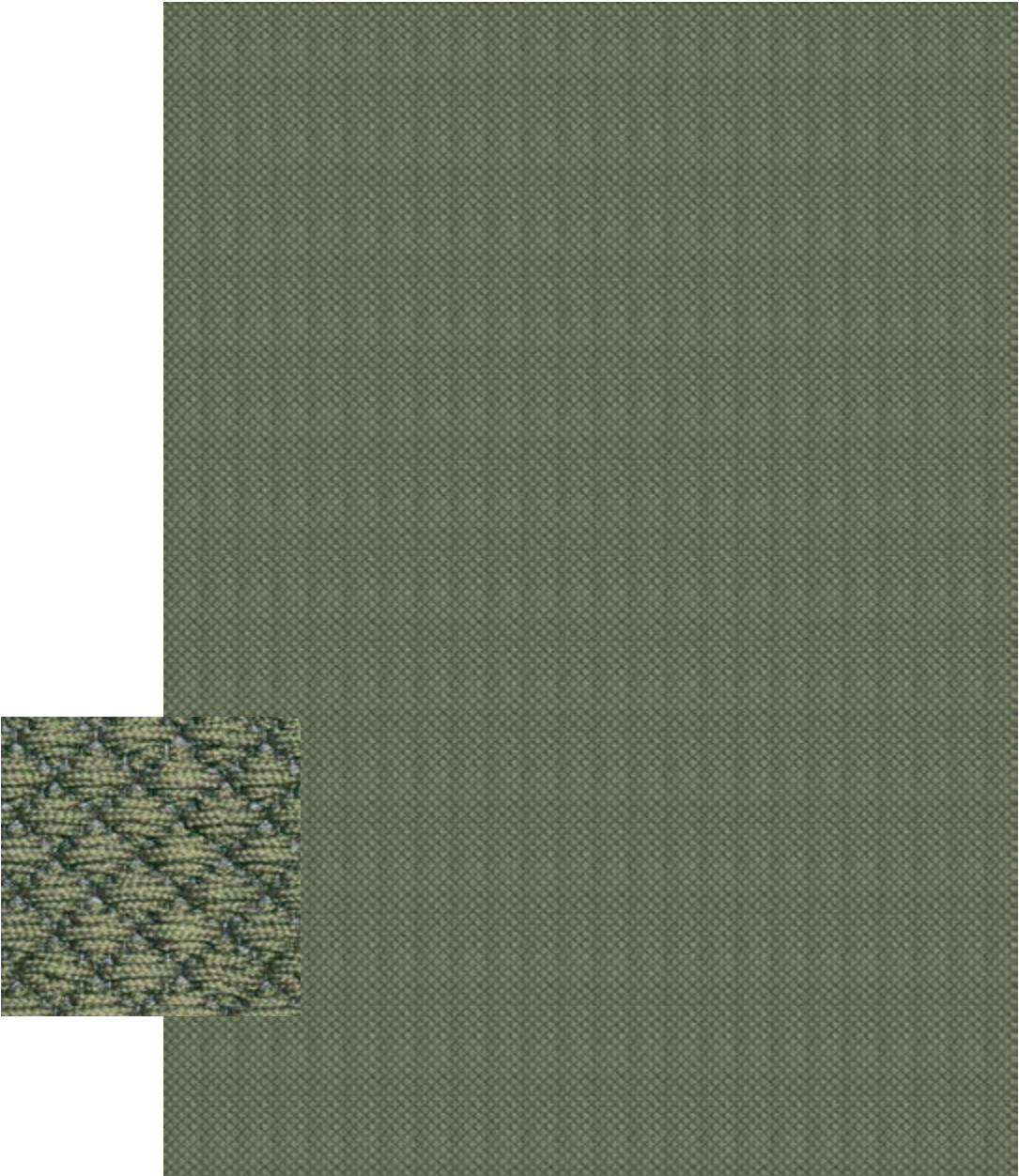
For a true color match and guidance,
please contact the commercial department.





PICO

COMBI LOOMS - SET 07



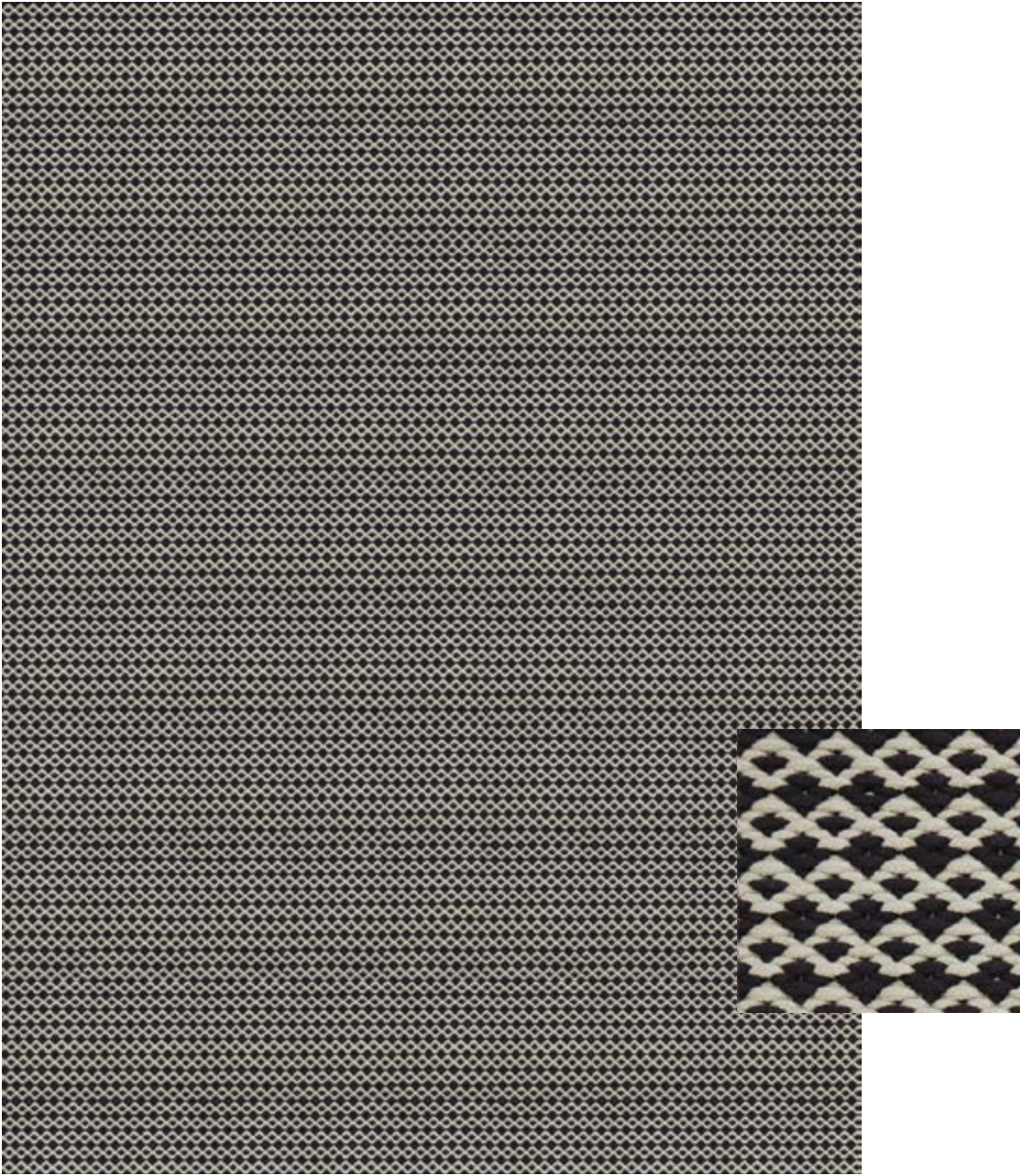
Colour Reference
Kombucha
Composition
Polypropylene
Size
170x240cm

For a true color match and guidance,
please contact the commercial department.



FLORES

COMBI LOOMS - SET 07

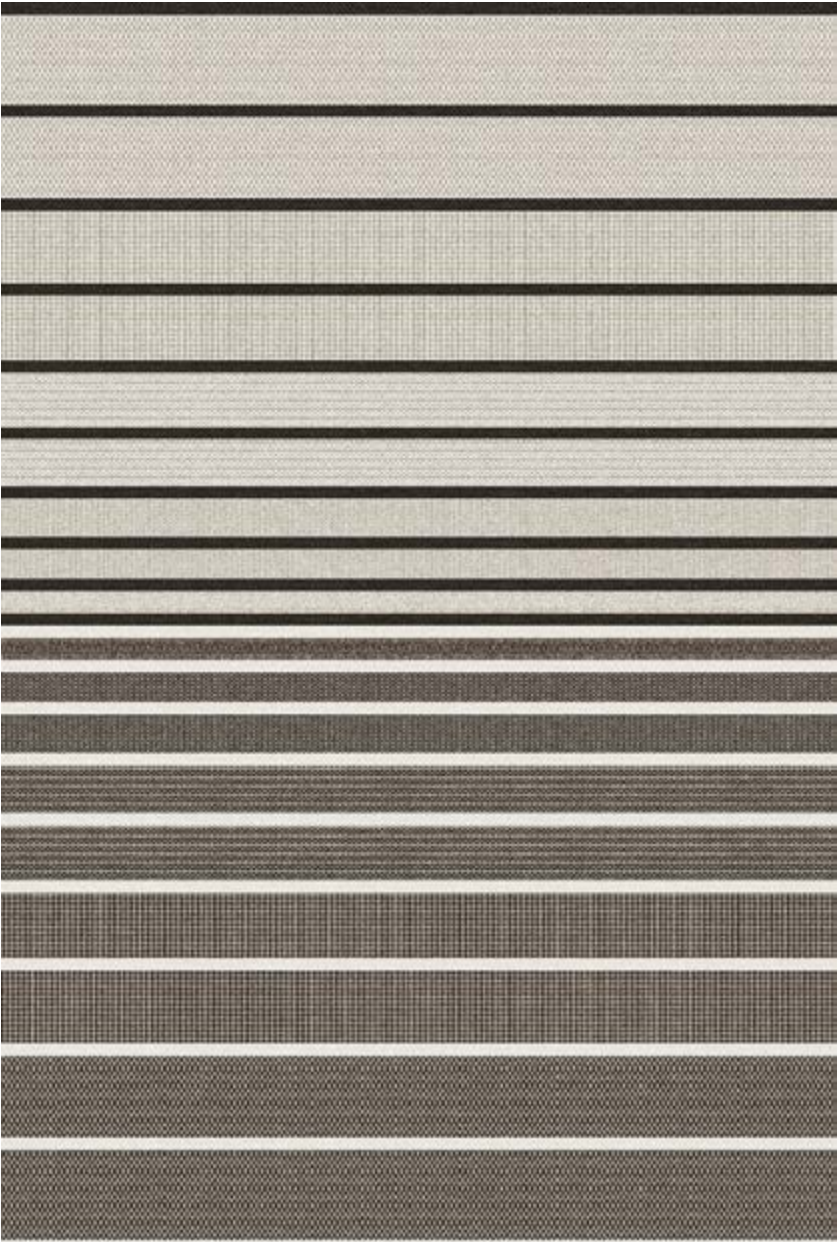


Colour Reference
Rawhide
Composition
Polypropylene
Size
160x220cm

GOBI

COMBI LOOMS - SET 07

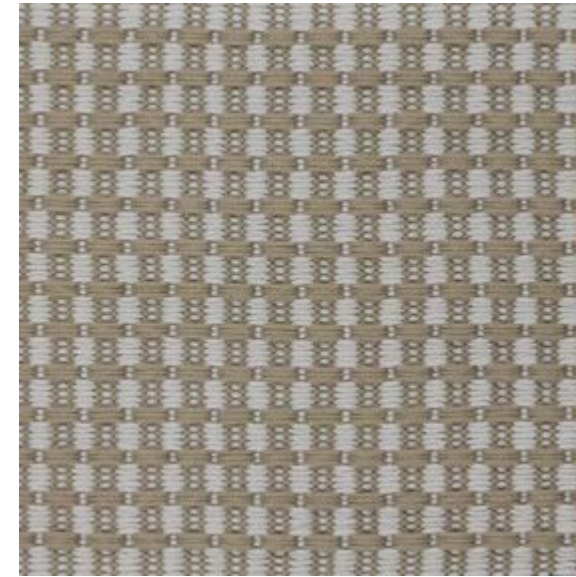
PATTERNS: PRINCIPE, CORVO, FAIAL, BERLENGAS AND FLORES



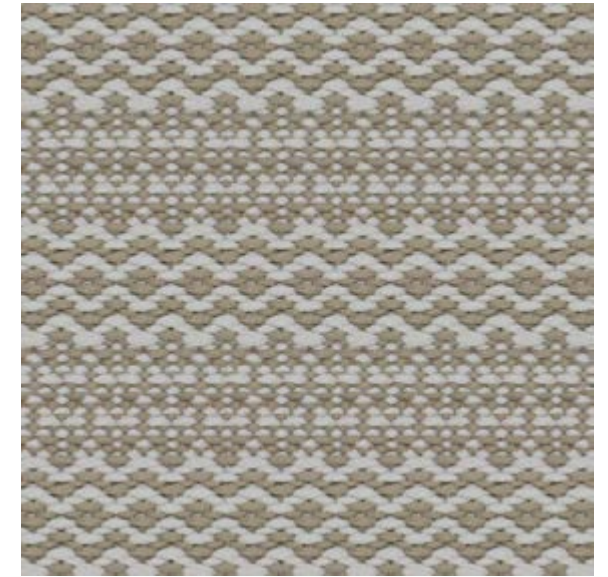
Colour Reference
Portobello
Composition
Polypropylene
Size
375X615cm

For a true color match and guidance,
please contact the commercial department.

GOBI PATTERNS



FAIAL | OL63 - OL11



PRINCIPE | OL63 - OL11



FLORES | OL11 - OL63



CORVO | OL63 - OL11

For a true color match and guidance,
please contact the commercial department.

COLOURS

In the heart of the factory, is stored one of our secret ingredients: the color range.

Creating a bespoke rug is a unique experience and at Ferreira de Sá the whole process starts and ends at its premises. Prior to the manufacturing, its design team elaborates the rug’s artwork which is sent to the client, together with the ropes.

Besides having its own color system, they also work with international reference systems such as Chromatone, ARS, Pantone TPX and Pantone Fashion+Home.

POLYPROPYLENE ROPES

Indoor/Outdoor

				
OL11	OL63	OL64	OL42	OL60
				
OL24	OL43	OL37	OL2	OL61
				
OL1	OL57	OL58	OM7	OM18
				
OM19	OM20	OM21	OM12	OM23
				
OM24	OM25	OM26	OM11	OM28

For a true color match and guidance,
please contact the commercial department.



HAND-WOVEN | TECHNICAL DETAILS

IN|OUTDOOR

Inspired by the sea, our outdoor rugs are produced with the most durable and refined polypropylene ropes, which combine an incredibly high resistance to sunlight and wear with beauty, color and design. Produced in the same tradicional looms, these rugs will add style and, above all, comfort to any exterior or interior environment.

Composition

Weft: 100% Polypropylene

Height

Thickness: 8mm

Certifications



Sizes

Width: up to 5m
Length: no limit

Weight

approx. 3 kg/m²



We hope to have pleased you with our HAND-WOVEN OUTDOOR COLLECTION.

Please contact us to discuss your requirements or schedule a visit.

info@ferreiradesa.pt

www.ferreiradesa.pt

FACTORY AND SHOWROOM:

Tapeçarias Ferreira de Sá, S.A.

Rua Ferreira de Sá, 50 - Silvalde

4500-629 Espinho | Portugal

phone: (+351) 227 333 070

fax: (+351) 227 333 079

